

# Operational profile

## AGA Mineração



● Operation

0 20km



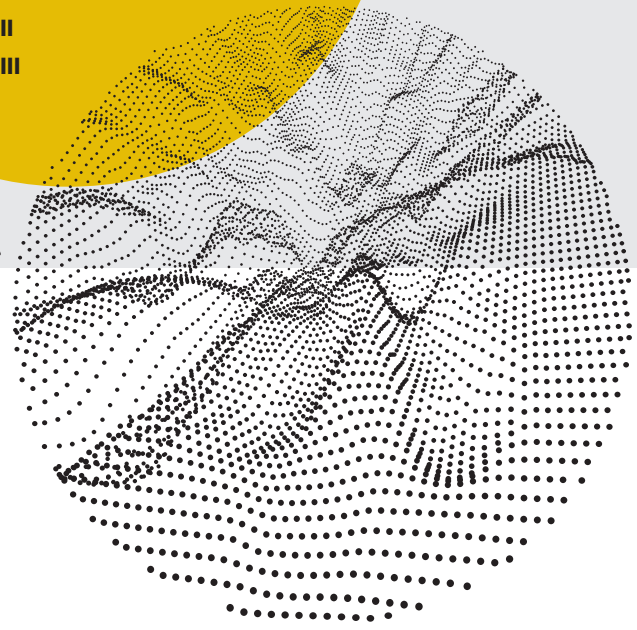
### Legend:

#### AGA Mineração Cuiabá complex

- 1 Cuiabá
- 2 Lamego
- 3 Queiroz plant refinery

#### AGA Mineração CdS complex

- 4 CdS I
- 5 CdS II
- 6 CdS III



AngloGold Ashanti **Córrego do Sítio Mineração (AGA Mineração)**, in the state of Minas Gerais, Brazil, comprises the Cuiabá Complex, the Córrego do Sítio mining operation and the Cuiabá and Queiroz plants.

- The **Cuiabá Complex** comprises the Cuiabá and Lamego underground mines, and the Cuiabá and Queiroz plants. Cuiabá has been in operation for over 30 years and Lamego for 10 years. The Cuiabá mine has changed from cut-and-fill to sub-level stoping, increasing the contribution from narrow-vein orebodies to the mine's total production and improving rock-engineering controls related to support, design and monitoring.

Ore from the Cuiabá and Lamego mines is processed at the Cuiabá gold plant. The concentrate produced is transported by aerial ropeway to the Queiroz plant for processing and refining. Total annual capacity of the complete Cuiabá circuit is 1.75Mt. The Queiroz hydrometallurgical plant also produces around 190,000t of sulphuric acid as a by-product, which is sold commercially in local Brazilian markets.

- Córrego do Sítio (CdS)**, in operation since 1989, consists of one open-pit mine and one underground mine. The oxide ore mined is treated by heap leach and a pressure leaching plant treats sulphide ore. The sub-level stoping mining method is used underground. The distance from the main underground mine (Mina I) to the metallurgical plant is around 15km

Combined annual plant capacity is 1.6Mt. Gold produced from both Cuiabá and Córrego do Sítio is refined at the Queiroz plant, 14km from the Cuiabá gold plant

AGA Mineração is currently one of three operations in AngloGold Ashanti's Americas region.

# KEY FEATURES 2022



**12%**

Contribution to total production

**10.3Moz**

Mineral Resource (inclusive)

**1.7Moz**

Mineral Reserve

# Operational profile

## AGA Mineração *continued*

### Key performance statistics

	Units	2022	2021	2020
<b>Operating performance</b>				
Cut-off grade <sup>(1)</sup>	g/t	0.30 – 4.31	0.43 – 4.73	3.06
Recovered grade	g/t	3.39	2.78	2.96
Tonnes treated/milled	Mt	2.8	3.7	3.8
Gold production	000oz	311	331	362
Total cash costs	\$/oz	1,088	858	747
All-in sustaining costs	\$/oz	1,841	1,519	1,050
Capital expenditure	\$m	199	195	103
Productivity	oz/TEC	7.17	7.75	8.98
<b>Safety performance</b>				
No. of fatalities		0	0	0
Total recordable injuries frequency rate	per million hours worked	2.38	3.94	4.67
<b>People</b>				
Total average no. of employees		5,702	6,142	5,528
– Permanent		3,662	3,921	3,758
– Contractors		2,040	2,221	1,770
<b>Environmental performance</b>				
No. of reportable environmental incidents		1	3	1
Water use	ML	7,367	7,956	8,063
Water use efficiency	kL/t	2.59	2.14	2.12
Energy consumption	PJ	2.01	2.01	1.98
Energy intensity	GJ/t	0.71	0.54	0.52
Greenhouse gas (GHG) emissions	000t	51	77	59
GHG emissions intensity	kg CO <sub>2</sub> e/t	18	21	16
Cyanide use	t	531	854	969
Total rehabilitation liabilities	\$m	54	56	46
<b>Social performance</b>				
Community investment	\$000	387	324	478
Payments to government <sup>(2)</sup>	\$m	129	203	139

<sup>(1)</sup> Based on the Mineral Reserve.

<sup>(2)</sup> Total paid to the Brazilian government for AGA Mineração and Serra Grande.