

# Operational profile 2024

## Serra Grande

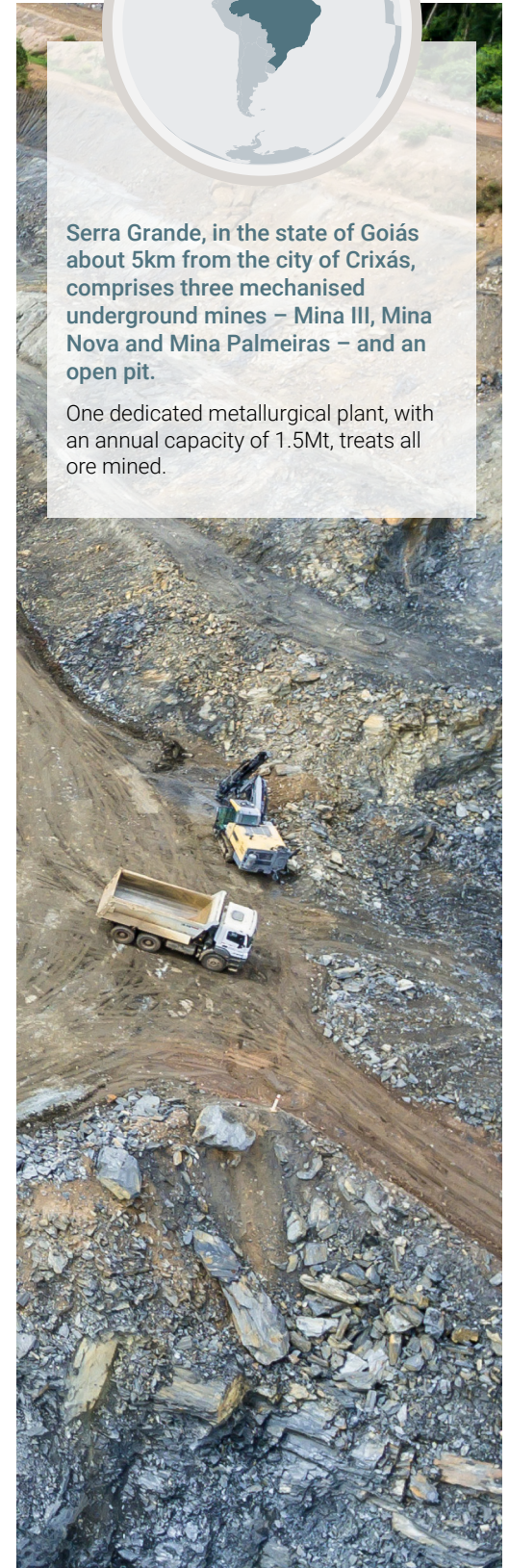
### Americas

Serra Grande is currently one of three operations in AngloGold Ashanti’s Americas region.



Serra Grande, in the state of Goiás about 5km from the city of Crixás, comprises three mechanised underground mines – Mina III, Mina Nova and Mina Palmeiras – and an open pit.

One dedicated metallurgical plant, with an annual capacity of 1.5Mt, treats all ore mined.



**Legend:**

- ① Serra Grande
- ② AGA Mineração

<b>Gold produced</b> <b>80,000oz</b>	<b>Mineral Reserve</b> <b>0.37Moz</b>
(2023: 86,000oz)	at 31 December 2024
	(31 December 2023: 0.49Moz)

<b>All-in sustaining cost</b> <b>\$2,039/oz</b>	<b>Capital expenditure</b> <b>\$40m</b>
(2023: \$2,198/oz)	(2023: \$55m)

Operational profile 2024 *continued*

## Serra Grande – key performance statistics

	Units	2024	2023	2022
<b>Operating performance</b>				
Cut-off grade <sup>(1)</sup>	g/t	<b>0.93 – 2.34</b>	0.81 – 2.04	1.59 – 2.13
Average recovered grade	g/t	<b>2.39</b>	2.37	2.28
Tonnes treated/milled	Mt	<b>1.0</b>	1.1	1.2
Gold production	000oz	<b>80</b>	86	88
Total cash costs	\$/oz	<b>1,411</b>	1,498	1,355
All-in sustaining costs	\$/oz	<b>2,039</b>	2,198	2,053
Capital expenditure	\$m	<b>40</b>	55	57
Productivity	oz/TEC	<b>5.94</b>	5.57	5.24
<b>Safety performance</b>				
No. of fatalities		<b>0</b>	0	0
Total recordable injury frequency rate (TRIFR)	per million hours worked	<b>3.8</b>	3.21	3.95
<b>People</b>				
Total average number of employees		<b>1,674</b>	1,837	1,977
– Permanent		<b>1,061</b>	1,122	1,246
– Contractors		<b>613</b>	715	731
<b>Environmental performance</b>				
No. of reportable environmental incidents		<b>0</b>	0	1
Water use	ML	<b>2,823</b>	1,522	2,407
Water use efficiency	kL/t	<b>2.72</b>	1.35	2.00
Energy use	PJ	<b>0.66</b>	0.70	0.73
Energy intensity	GJ/t	<b>0.64</b>	0.62	0.61
Greenhouse gas (GHG) emissions	000t	<b>15</b>	18	23
GHG emissions intensity	kg CO <sub>2</sub> e/t	<b>15</b>	16	19
Cyanide use	t	<b>315</b>	310	382
Total rehabilitation liabilities	\$m	<b>41</b>	16	16
<b>Social performance</b>				
Community investment	\$m	<b>0.04</b>	0.11	0.07
Payments to government	\$m	<b>22</b>	22	<sup>(2)</sup> 22

<sup>(1)</sup> Based on the Mineral Reserve. Cut-off grade is based on sulphide

<sup>(2)</sup> Restated data

### Restatements

Ongoing improvements to our data collection systems and measurement methodologies can result in restatements of previously reported data. Restatements of information will be provided when a change in measurement methodology or an error in previously reported information results in the potential to influence a users' decision-making. Restatements will also be provided if there are significant changes in reporting parameters (e.g., mergers, acquisitions, divestments, etc.). Such restatements are included as footnotes where applicable.